

ROSA

LIGHT BUS



FUSO ROSA

Photos and specifications may vary from actual unit. Sojitz Fuso Philippines reserves the right to change specifications without prior notice.

DIMENSIONS & WEIGHT		25-seater	29-seater	33-seater
Overall Length / Width / Height	(mm)	6,245 / 2,010 / 2,630	6,990 / 2,010 / 2,630	7,730 / 2,010 / 2,630
Wheelbase	(mm)	3,490	3,995	4,550
Wheel Tread (Front / Rear)	(mm)	1,655 / 1,495	1,655 / 1,495	1,655 / 1,495
Min. Ground Clearance	(mm)	190	190	190
Interior Length / Width / Height	(mm)	5,480 / 1,845 / 1,860	6,225 / 1,845 / 1,860	6,970 / 1,845 / 1,860
Front / Rear Overhang (F.O.H. / R.O.H.)	(mm)	940 / 1,800	940 / 2,040	940 / 2,225
Curb Weight	(kg)	3,520	3,685	3,955
Gross Vehicle Weight (GVW)	(kg)	5,200	5,600	6,100
COMFORT				
Air Condition		Equipped	Equipped	Equipped
Automatic Door		Equipped	Equipped	Equipped
Parcel Rack		Equipped	Equipped	Equipped
ENGINE				
Model		4M50-5AT5	4M50-5AT5	4M50-5AT5
Type		4-Stroke Direct Injection Diesel with Turbocharger and Water Intercooler		
Cylinders		4 In-line	4 In-line	4 In-line
Displacement	(cc)	4,899	4,899	4,899
Compression Ratio		15.5:1	15.5:1	15.5:1
Max. Power	(Ps / rpm)	180 / 2,700	180 / 2,700	180 / 2,700
Max. Torque	(N-m / rpm)	530 / 1,600	530 / 1,600	530 / 1,600
Fuel Tank Capacity	(L)	100	100	100
TRANSMISSION				
Type		6 Forward and 1 Reverse M/T (Synchronesh)		
Gear Ratios	1st	5.175	5.175	5.175
	2nd	2.913	2.913	2.913
	3rd	1.682	1.682	1.682
	4th	1.000	1.000	1.000
	5th	0.793	0.793	0.793
	6th	0.669	0.669	0.669
	Reverse	5.175	5.175	5.175
Final Gear Ratio		4.875	4.875	4.875
AXLE				
Front / Rear		Reverse Elliot "I" Beam / Fully Floating		
BODY & SUSPENSION				
Body Type		Semi-Integral (Monocoque)		
Front		Parabolic Laminated Leaf Spring with Shock Absorber and Stabilizer		
Rear		Parabolic Laminated Leaf Spring with Shock Absorber		
BRAKE				
Service		Drum Brake with Manual Adjuster (Front and Rear), Hydraulic with Vacuum Servo Assistance		
Parking		Internal Expanding Type at Rear Side of Transmission		
Auxiliary		Exhaust Brake		
TIRE & WHEEL				
Tire (Single / Dual)		Single 7.00 R16-10 PRLT / Dual 7.00 R16-8PRLT		
Wheel		16 x 5.50		
STEERING				
Gear Type		Ball and Nut Type with Integral-type Hydraulic Power Booster		
Power Steering		Equipped		
SAFETY				
Seat belts		3 pt. ELR x2 and 2 pt. Lapbelt x3, Reverse Warning Buzzer		
ELECTRICAL SYSTEM				
Battery (Voltage)		24V		



MADE IN JAPAN



*3 yrs or 100,000 KMs whichever comes first

MITSUBISHI FUSO Authorised Distributor
SOJITZ FUSO PHILIPPINES CORPORATION
www.fuso.com.ph



ROSA



Rear luggage area

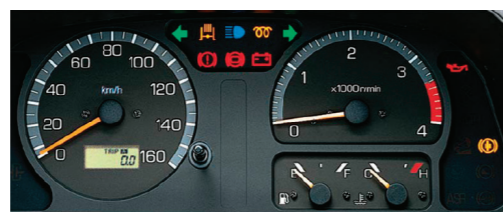
Powered by a 4.9L Turbo Direct Injection Diesel Engine

Available in • 29-seater (Deluxe) • 33-seater (Grand)

Cockpit and ergonomics



The Rosa features a driver-centric dashboard layout with car-like features



High-contrast meter cluster



Tilt adjustable steering wheel with collapsible steering column

Passenger comfort



Spacious and relaxing interior with individually reclining seats for each passenger



Ample legroom



Automatic passenger door